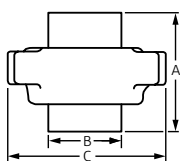
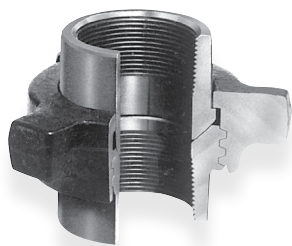


Hammer Unions

3,000 psi cwp – 4,500 psi test

Fig. 301HU Steam Service Union Black Nut/Green Subs
Figure 301HU
 Steam Service Union
 Black Nut/Green Subs


Ideal steam service union.

Size		Item	Unit Weight		A		B		C		TPI	Material	
NPS	Dn		lbs	kg	in	mm	in	mm	in	mm		Nuts	Subs
1 1/2	40	Union Complete	1.75	0.79									
		Nut	-	-									
		Male Sub	-	-	2.670	67.82	1.640	41.66	4.065	103.38	6 STD	SF	SF
		Female Sub	-	-									
		Seal Ring	-	-									
2	50	Union Complete	4.90	2.22									
		Nut	-	-									
		Male Sub	-	-	3.275	83.31	2.825	71.88	5.900	149.86	3 1/2 STD	SF	SF
		Female Sub	-	-									
		Seal Ring	-	-									

Warnings:

1. Do not make up or break out Unions in pressurized lines.
2. Always use good safety practices, including use of safety glasses, when making up or breaking out Unions.

TPI = Threads per inch

SF = Steel Forging

PROJECT INFORMATION	APPROVAL STAMP
Project:	Approved
Address:	Approved as noted
Contractor:	Not approved
Engineer:	Remarks:
Submittal Date:	
Notes 1:	
Notes 2:	

Fig. 301HU Steam Service Union Black Nut/Green Subs



Material

ASTM A29, A105

Full Traceability

All Catawissa Oilfield Hammer Unions are fully traceable and are available with complete mill certifications upon request.

Interchangeability

All Catawissa Oilfield Unions are machined to rigid quality standards ensuring that like components of the same size, figure number and pressure rating are fully interchangeable in the field. Catawissa Oilfield Unions are interchangeable with most leading union manufacturers.

Full Range of End Connections

Catawissa Oilfield Hammer Unions are available in threaded ends, as well as butt weld and non-pressure seal ends. When you choose Catawissa you receive the utmost in quality, the widest selection and unmatched on-time deliveries.



asc-es.com

Building connections that last™

Fig. 301HU Steam Service Union Black Nut/Green Subs

Catawissa Quick Reference Chart

Standard Service												
Fig. No.	CWP	TEST	API Color Code		Pipe Size (in.)							
			SUB	NUT	1"	1¼"	1½"	2"	2½"	3"	4"	6"
100	1,000	1,500	Yellow	Black								
200	2,000	3,000	Gray	Blue								
206	2,000	3,000	Gray	Blue								
211	2,000	3,000	Light Blue	Gray								
300	2,000	3,000	Yellow	Gray								
301	3,000	4,500	Green	Black								
400	4,000	6,000	Red	Black								
602	6,000	9,000	Orange	Black								
607	6,000	9,000	Silver	Yellow								
1502	15,000	22,500	Red	Blue								